

Economy type

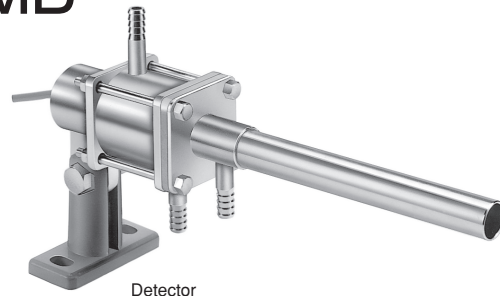
# Water-cooling Type HMD /800°C or more

## PR-1T1

### Detectable temperature 800°C or more

This sensor is an economy type, water-cooling type HMD which can detect heated materials with 800°C .

- Small size and economy price.
- Adjuster is provided in accordance with temperature of heated materials.
- It is easy to replace element only.



Detector



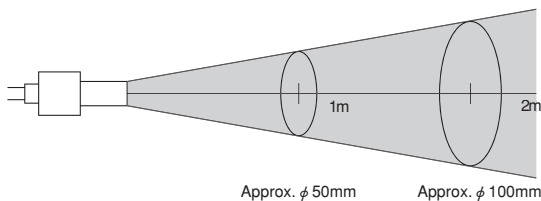
Amplifier  
(Appearance is a little different.  
see external dimension)

### Specifications

Type	Through-beam type
Model	Amplifier: PR-1T1 Detector: WS-35H
Power source	100 to 110VAC/200 to 220VAC(±10% 50/60Hz)
Power consumption	10VA or less
Detecting distance	2m(depending on size or temperature of detecting object)
Detectable object	Heated materials with 800°C or more
Detecting view	Approx. φ50 at 1m
Response time	25msec or less
Operating mode	Changeover of DARK-ON/LIGHT-ON
Control output	1C relay(250VAC 5A cosφ=1)
Connection	M3 screw terminal
Ambient temperature	-10 to +50°C, (-10 to +150°C when water-cooling for detector only)
Ambient humidity	45 to 85%RH(Not icing)
Cooling water	Withstand pressure: 490kPa, pressure: 98 to 196kPa, amount: 2 to 4lit/min., temperature: 35°C or less, φ11 hose nipple
Air purge*	Withstand pressure: 980kPa, amount: 100lit./min. or more, φ11 hose nipple
Case	Amp. unit: steel plate(SPCC), detector: steel plate nickel-plated, stand for detector: Aluminum die-casting
Weight	Amp. unit: Approx. 2.1kg, detector: Approx. 1.5kg

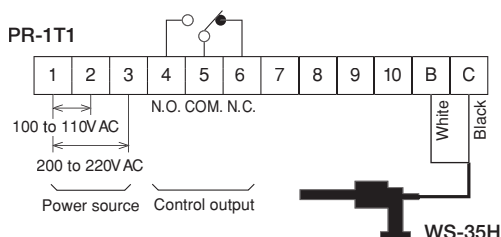
\* Non-air dust-purge hood type is also available.

### Detecting view



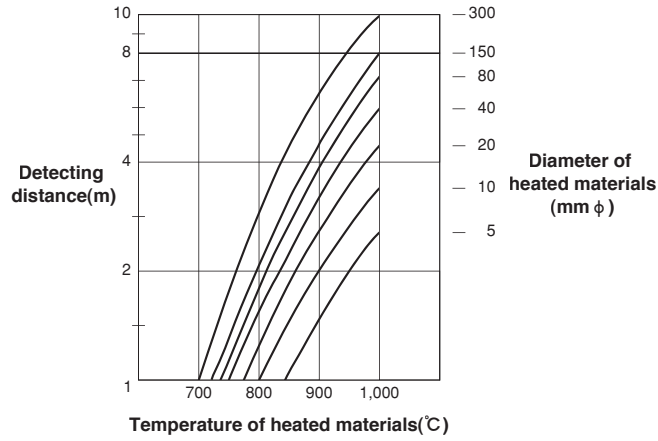
Approx. φ 50mm      Approx. φ 100mm

### Connection



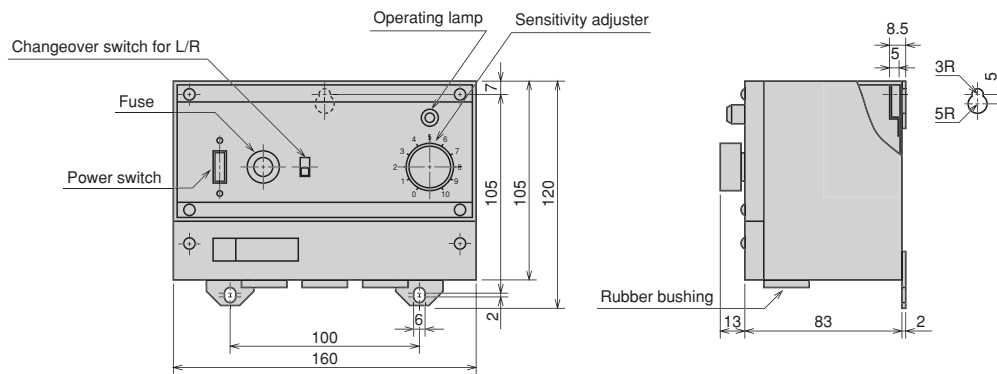
Note) It shows power-on and non-detecting state. (Sensor doesn't receive radiant heat)

■ Characteristic data(Typical example)



■ External dimensions

Amplifier unit



Detector

