

# NEW PRODUCTS

HOKUYO

FREE POWER SOURCE TYPE PHOTOELECTRIC SWITCH

PLX series



## General/Feature

- \* Through-beam type 10m, Retro-reflective type (With polarized filter) 4m, Reflection type 70cm
- \* Free power source, 24 to 240VAC / 12 to 110VDC
- \* Protective structure IP66

## Specifications

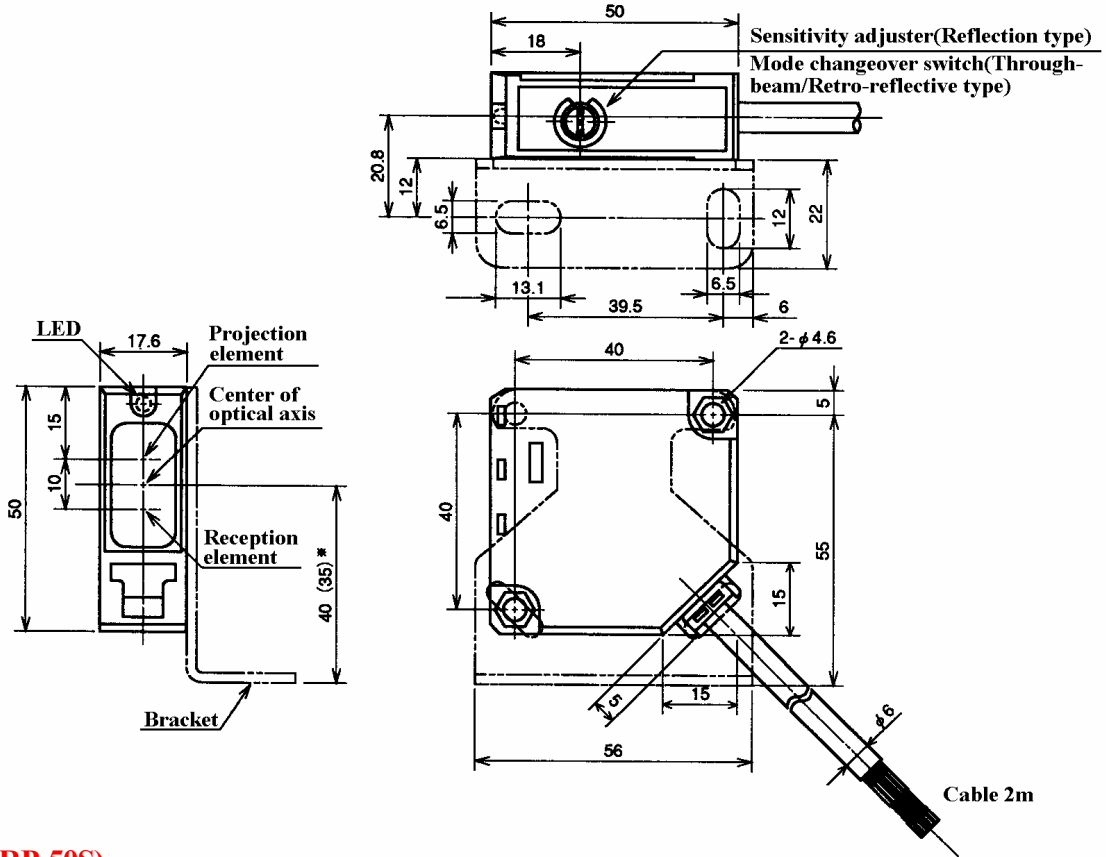
Kind	Through-beam type		Retro-reflection type	Diffuse-Reflection type	
	Model No.	PLX-305W	PLX-105W	PLX-403W	PLX-701L
Light source	Infra-red LED		Red LED	Infra-red LED	
Power source	24 to 240VAC(50/60Hz, Ripple 10% or less) 12 to 120VDC(Ripple 10% or less)				
Power consumption	4W or less for both projector and receiver		5W or less		
Detection distance	30m or less	10m or less	0.1 to 4m or less *1	70cm or less(White paper with 10cm <sup>2</sup> )	
Response time	20ms or less				
Operation mode	Light-ON/Dark-ON by changeover switch			Dark-ON	Light-ON
Control output	1C relay, 250VAC 3A or less(Resistance load), 30VDC 3A or less(Resistance load) Mechanical life : 50 million times, Electrical life : 0.1 million times				
Sensitivity adjuster	Not provided(Fixed)			Provided	
Connection	Cable type(0.3mm <sup>2</sup> ×5 cores, 2m long) *2				
Protective structure	IP66(IEC standard)				

\*1 When using RRP-50S

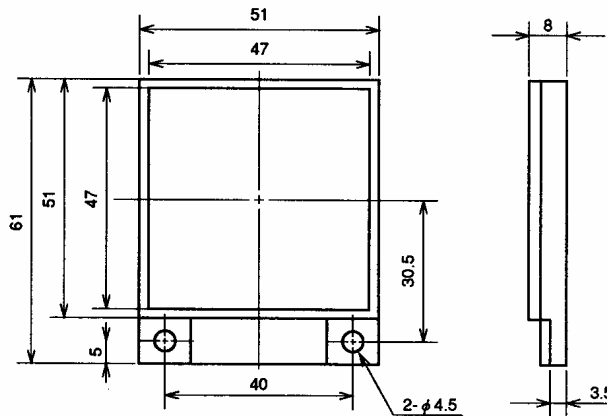
\*2 Cable of projector for through-beam type is 2 cores.

## External dimension

### \* Sensor

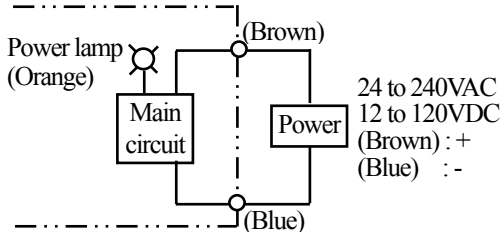


### \* Reflector(RRP-50S)

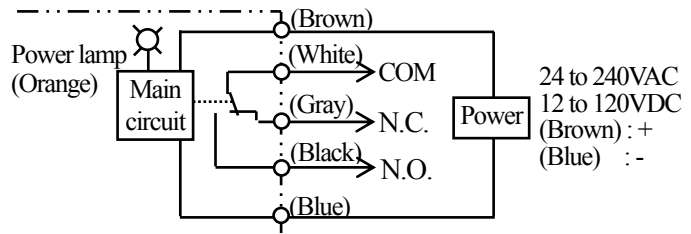


## Connection

### \* Projector of through-beam type



### \* Receiver of through-beam/Retro-reflection/ Diffuse-Reflection type



**PHOTO SENSOR, LASER SENSOR, MICROWAVE SENSOR, COUNTER, AUTOMATIC DOOR**



**HOKUYO AUTOMATIC CO.,LTD.**  
 1-10-9 Niitaka, Yodogawa-Ku, Osaka, Japan  
 Tel(06)6394-2102 Fax(06)6394-2339  
<http://www.hokuyo-aut.jp>  
 E-mail:foreign-trade@hokuyo-aut.co.jp