



# MF2C ROTARY LIMIT SWITCH

## TECHNICAL SPECIFICATIONS

Conformity to Community Directives	2006/95/CE	
Conformity to Standards	EN 60204-1 EN 60947-1 EN60947-5-1 EN 60529	
Ambient temperature	Storage	-40°C/+70°C
	Operational	-25°C/+70°C
Protection degree	IP 65	
Insulation category	Class II	
Cable entry	Cable clamp M16	
Markings	CE (UL - (c)UL limit switches available on request)	

## TECHNICAL SPECIFICATIONS OF THE SWITCHES

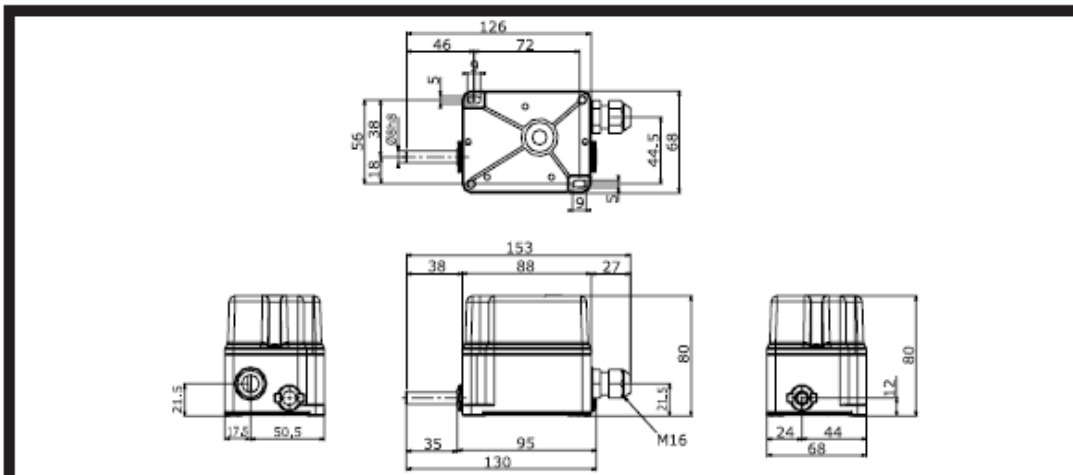
Utilisation category	AC 15
Rated operational current	3 A
Rated operational voltage	250 V
Rated thermal current	10 A
Rated insulation voltage	300 V~
Mechanical life	1x10 <sup>6</sup> operations
Terminal referencing	According to EN 50013
Connections	6.3 mm Faston taps
Markings	CE - UL - (c)UL

## STANDARD LIMIT SWITCH CODES

REVOLUTION RATIO	2 SWITCHES	3 SWITCHES
1:15	PF0901 0015 0003	PF0901 0015 0004
1:25	PF0901 0025 0005	PF0901 0025 0006
1:50	PF0901 0050 0005	PF0901 0050 0012
1:75	PF0901 0075 0004	PF0901 0075 0005
1:100	PF0901 0100 0005	PF0901 0100 0007
1:150	PF0901 0150 0003	PF0901 0150 0004

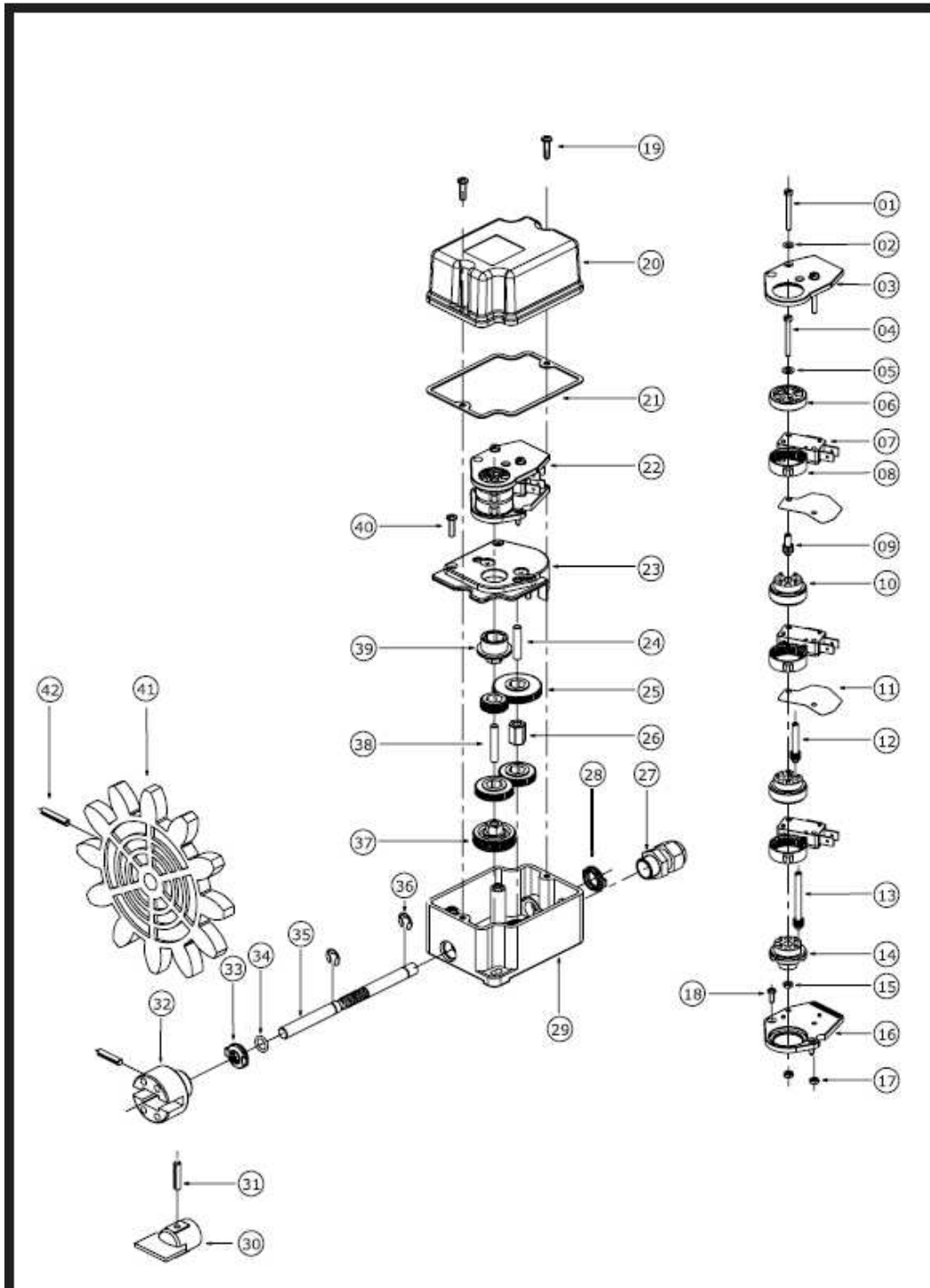
Standard limit switches are equipped with 2 or 3 snap action switches and with pointed cams PRSL7140P1. Other assemblies and revolution ratios are available on request. Maximum revolution ratio 1:150.

## OVERALL DIMENSIONS



# MF2C ROTARY LIMIT SWITCH














DETAILED DRAWING



MF2C ROTARY LIMIT SWITCH

# MF2C ROTARY LIMIT SWITCH

## SPARE PARTS

REFERENCE	DRAWING	CODE	DESCRIPTION
07		PRSL0003XX	Snap action switch
08		PRSL7140PI	Pointed cam
08		PRSL7141PI	Sector cam
08		PRSL7142PI	10 point cam
08		PRSL7143PI	Circular cam
08		PRSL7144PI	180° cam
25		PRSL6600PI	Lateral gear wheel Z 36
		PRSL6601PI	Lateral gear wheel Z 38
		PRSL6602PI	Lateral gear wheel Z 40
		PRSL6603PI	Lateral gear wheel Z 42
		PRSL6604PI	Lateral gear wheel Z 44
		PRSL6605PI	Lateral gear wheel Z 46
		PRSL6606PI	Lateral gear wheel Z 48
		PRSL6607PI	Lateral gear wheel Z 50
		PRSL6608PI	Lateral gear wheel Z 52
		PRSL6609PI	Lateral gear wheel Z 54
		PRSL6611PI	Lateral gear wheel Z 56
PRSL6612PI	Lateral gear wheel Z 58		
PRSL6613PI	Lateral gear wheel Z 60		
PRSL6614PI	Lateral gear wheel Z 62		
PRSL6615PI	Lateral gear wheel Z 64		
30 +31		PRSL0919PI	Male coupling
32 +31		PRSL0920PI	Female coupling
35		PRTO0063PE	Single-thread worm shaft
35		PRTO0075PE	Flexible shaft
37		PRSL6701PI	Central gear wheel Z 50
41 +42		PRSL0911PI	Pinion gear M10 Z12
		PRSL0912PI	Pinion gear M12 Z10
		PRSL0913PI	Pinion gear M14 Z10
		PRSL0914PI	Pinion gear M16 Z10
		PRSL0915PI	Pinion gear M20 Z8
		PRSL0916PI	Pinion gear M5 Z12
		PRSL0917PI	Pinion gear M6 Z11
		PRSL0918PI	Pinion gear M8 Z12
		PRSL0944PI	Pinion gear M12 Z12

MF2C ROTARY LIMIT SWITCH



adresimiz  
değiştii

Emekyemez Mah. Yüksek Minare Sk. No:8 / 17  
80020 Karaköy / İstanbul  
Tel:212/2359535  
Fax:212/2359537