



# GF4C ROTARY LIMIT SWITCH

## TECHNICAL SPECIFICATIONS

Conformity to Community Directives	2006/95/CE		
Conformity to Standards	EN 60204-1	EN 60947-1	EN60947-5-1
	EN 60529		
Ambient temperature	Storage	-40°C/+70°C	
	Operational	-25°C/+70°C	
Protection degree	IP 65		
Insulation category	Class II		
Cable entry	Cable clamp M20		
Markings	CE (UL - (c)UL limit switches available on request)		

## TECHNICAL SPECIFICATIONS OF THE SWITCHES

Utilisation category	AC 15
Rated operational current	3 A
Rated operational voltage	250 V
Rated thermal current	10 A
Rated insulation voltage	300 V~
Mechanical life	1x10 <sup>6</sup> operations
Terminal referencing	According to EN 50013
Connections	Screw-type terminals with self-lifting pads
Markings	CE - UL - (c)UL

## STANDARD LIMIT SWITCH CODES

REVOLUTION RATIO	TYPE OF CONTACT	2 SWITCHES	3 SWITCHES	4 SWITCHES
1:1	Snap	PF0903 0001 0003	PF0903 0001 0002	PF0903 0001 0001
	Slow	PF0903 0001 0004	PF0903 0001 0005	PF0903 0001 0006
1:5	Snap	PF0903 0005 0002	PF0903 0005 0003	PF0903 0005 0001
	Slow	PF0903 0005 0004	PF0903 0005 0005	PF0903 0005 0006
1:10	Snap	PF0903 0010 0003	PF0903 0010 0004	PF0903 0010 0002
	Slow	PF0903 0010 0005	PF0903 0010 0006	PF0903 0010 0007
1:15	Snap	PF0903 0015 0004	PF0903 0015 0003	PF0903 0015 0002
	Slow	PF0903 0015 0007	PF0903 0015 0008	PF0903 0015 0001
1:20	Snap	PF0903 0020 0002	PF0903 0020 0003	PF0903 0020 0001
	Slow	PF0903 0020 0004	PF0903 0020 0005	PF0903 0020 0006
1:25	Snap	PF0903 0025 0006	PF0903 0025 0003	PF0903 0025 0001
	Slow	PF0903 0025 0007	PF0903 0025 0008	PF0903 0025 0002
1:50	Snap	PF0903 0050 0002	PF0903 0050 0003	PF0903 0050 0006
	Slow	PF0903 0050 0028	PF0903 0050 0017	PF0903 0050 0007
1:75	Snap	PF0903 0075 0007	PF0903 0075 0008	PF0903 0075 0004
	Slow	PF0903 0075 0009	PF0903 0075 0010	PF0903 0075 0006
1:100	Snap	PF0903 0100 0002	PF0903 0100 0006	PF0903 0100 0003
	Slow	PF0903 0100 0001	PF0903 0100 0013	PF0903 0100 0004
1:150	Snap	PF0903 0150 0002	PF0903 0150 0011	PF0903 0150 0008
	Slow	PF0903 0150 0001	PF0903 0150 0009	PF0903 0150 0003
1:200	Snap	PF0903 0200 0006	PF0903 0200 0002	PF0903 0200 0003
	Slow	PF0903 0200 0007	PF0903 0200 0004	PF0903 0200 0008
1:250	Snap	PF0903 0250 0003	PF0903 0250 0007	PF0903 0250 0008
	Slow	PF0903 0250 0009	PF0903 0250 0010	PF0903 0250 0011
1:300	Snap	PF0903 0300 0004	PF0903 0300 0006	PF0903 0300 0007
	Slow	PF0903 0300 0008	PF0903 0300 0009	PF0903 0300 0010

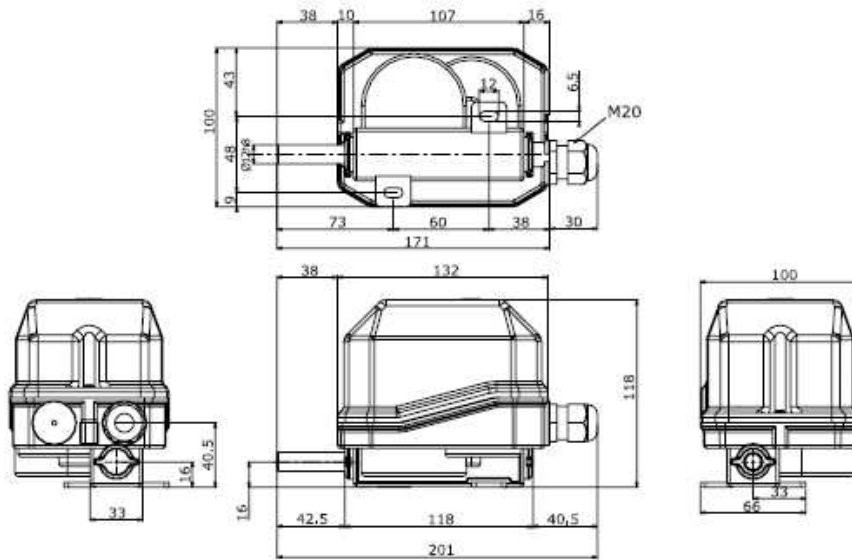
Standard limit switches are equipped with 2,3 or 4 snap or slow action switches and with pointed cams PRSL7140PI. Other assemblies and revolution ratios are available on request. It is possible to assemble up to 6 switches. Maximum revolution ratio 1:969.

GF4C ROTARY LIMIT SWITCH

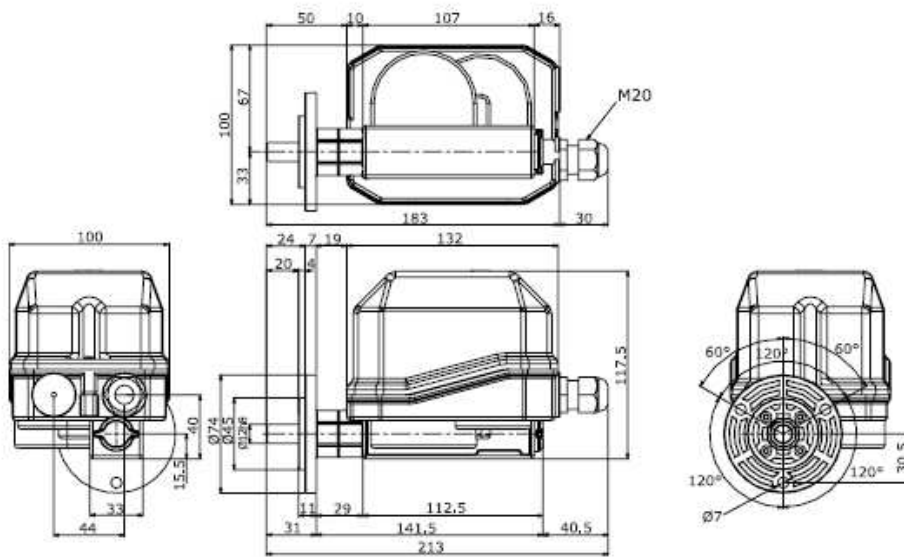


OVERALL DIMENSIONS

STANDARD LIMIT SWITCH



LIMIT SWITCH WITH FLANGE



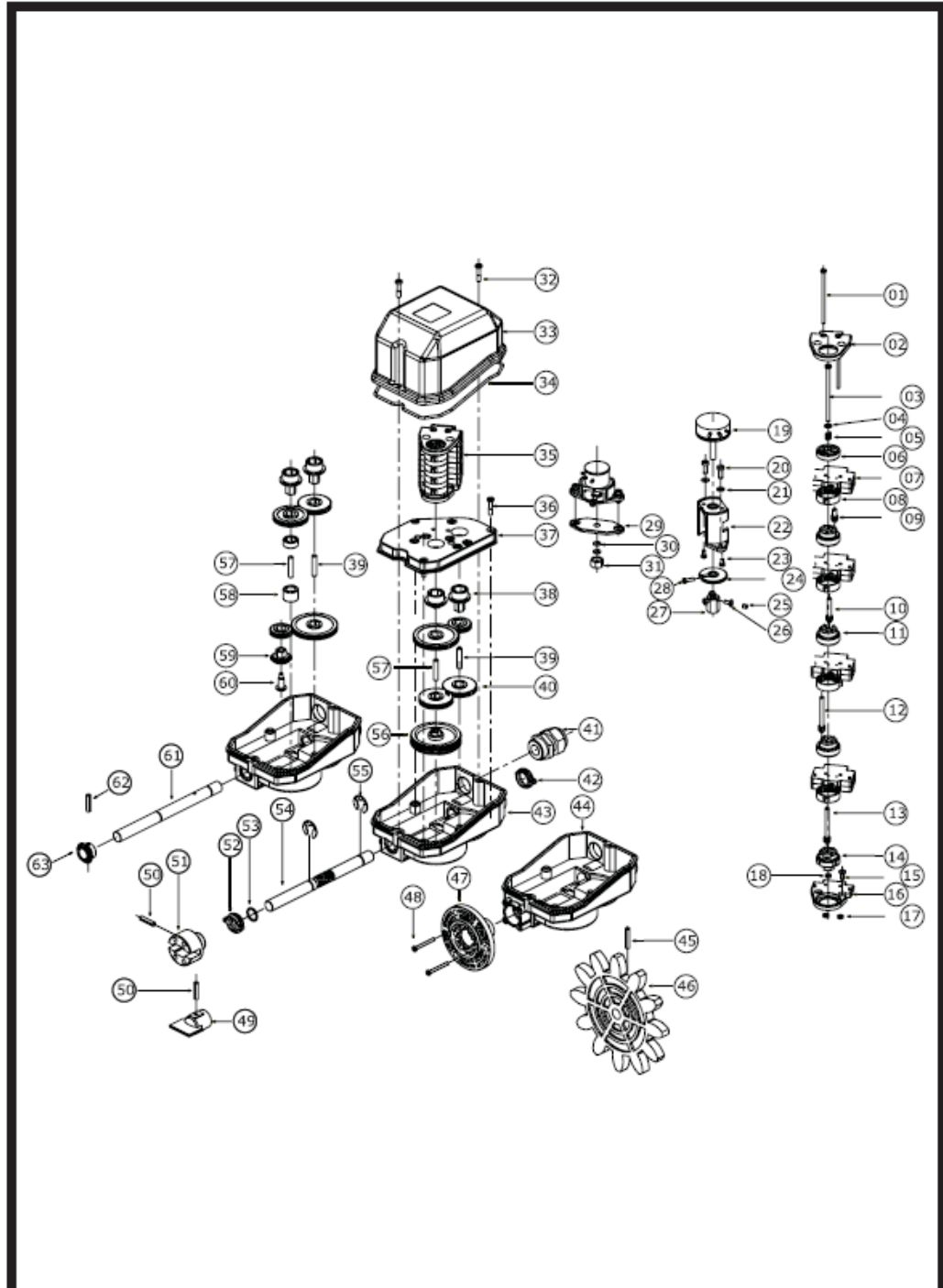
GF4C ROTARY LIMIT SWITCH



# GF4C ROTARY LIMIT SWITCH




















## GF4C ROTARY LIMIT SWITCH

DETAILED DRAWING



# GF4C ROTARY LIMIT SWITCH

## SPARE PARTS

REFERENCE	DRAWING	CODE	DESCRIPTION
07		PRSL0036XX PRSL0037XX	Snap action switch Slow action switch
08		PRSL7140PI	Pointed cam
08		PRSL7141PI	Sector cam
08		PRSL7142PI	10 point cam
08		PRSL7143PI	Circular cam
08		PRSL7144PI	180° cam
19		PRVV9020PE PRVV9025PE PRVV9035PE	Potentiometer Megatron 4,7 kW with continuous rotation Potentiometer Megatron 10 kW with continuous rotation Potentiometer Megatron 2,2 kW with continuous rotation
19		PRVV9030PE PRVV9031PE	Potentiometer MCB 10 kΩ Potentiometer MCB 10 kΩ with continuous rotation
22 +20+21		PRSL0928PI	Small support for potentiometer with O-ring
22 +20+21		PRSL0929PI	Large support for potentiometer
22 +20+21		PRSL0930PI	Medium support for potentiometer
22 +20+21		PRSL0931PI	Medium support for potentiometer
24 +28		PRSL0909PI	Adjusting gear
27 +26		PRSL0932PI	Fixed coupling for potentiometer 33mm
27 +25		PRSL0933PI	Fixed coupling for potentiometer 13mm
27 +26		PRSL0934PI	Fixed coupling for potentiometer 17mm
29		PRSL9409PI	Support plate for potentiometer with O-ring
31 +30		PRSL0927PI	Bush for potentiometer
40		PRSL6598PI PRSL6599PI PRSL6600PI PRSL6601PI PRSL6602PI	Lateral gear wheel Z 35 Lateral gear wheel Z 37 Lateral gear wheel Z 36 Lateral gear wheel Z 38 Lateral gear wheel Z 40

GF4C ROTARY LIMIT SWITCH



# GF4C ROTARY LIMIT SWITCH



## SPARE PARTS

REFERENCE	DRAWING	CODE	DESCRIPTION
40		PRSL6603PI	Lateral gear wheel Z 42
		PRSL6604PI	Lateral gear wheel Z 44
		PRSL6605PI	Lateral gear wheel Z 46
		PRSL6606PI	Lateral gear wheel Z 48
		PRSL6607PI	Lateral gear wheel Z 50
		PRSL6608PI	Lateral gear wheel Z 52
		PRSL6609PI	Lateral gear wheel Z 54
		PRSL6611PI	Lateral gear wheel Z 56
		PRSL6612PI	Lateral gear wheel Z 58
		PRSL6613PI	Lateral gear wheel Z 60
		PRSL6614PI	Lateral gear wheel Z 62
		PRSL6615PI	Lateral gear wheel Z 64
		PRSL6616PI	Lateral gear wheel Z 66
		PRSL6617PI	Lateral gear wheel Z 68
		PRSL6618PI	Lateral gear wheel Z 70
		PRSL6619PI	Lateral gear wheel Z 72
		PRSL6620PI	Lateral gear wheel Z 74
		PRSL6621PI	Lateral gear wheel Z 76
		PRSL6622PI	Lateral gear wheel Z 78
		PRSL6623PI	Lateral gear wheel Z 80
		PRSL6624PI	Lateral gear wheel Z 82
		PRSL6625PI	Lateral gear wheel Z 84
		PRSL6626PI	Lateral gear wheel Z 86
		PRSL6627PI	Lateral gear wheel Z 88
		PRSL6628PI	Lateral gear wheel Z 90
		PRSL6629PI	Lateral gear wheel Z 92
		PRSL6630PI	Lateral gear wheel Z 94
		PRSL6631PI	Lateral gear wheel Z 96
PRSL6632PI	Lateral gear wheel Z 98		
PRSL6633PI	Lateral gear wheel Z 100		
PRSL6634PI	Lateral gear wheel Z 102		
PRSL6635PI	Lateral gear wheel Z 104		
PRSL6636PI	Lateral gear wheel Z 106		
PRSL6637PI	Lateral gear wheel Z 108		
PRSL6638PI	Lateral gear wheel Z 107		
PRSL6639PI	Lateral gear wheel Z 109		
46 +45		PRSL0911PI	Pinion gear M10 Z12
		PRSL0912PI	Pinion gear M12 Z10
		PRSL0913PI	Pinion gear M14 Z10
		PRSL0914PI	Pinion gear M16 Z10
		PRSL0915PI	Pinion gear M20 Z8
		PRSL0916PI	Pinion gear M5 Z12
		PRSL0917PI	Pinion gear M6 Z11
		PRSL0918PI	Pinion gear M8 Z12
PRSL0944PI	Pinion gear M12 Z12		
47 +48		PRSL0947PI	Flange
49 +50		PRSL0919PI	Male coupling
51 +50		PRSL0920PI	Female coupling
54		PRTO0065PE	Single-thread worm shaft
		PRTO0054PE	Double-thread worm shaft
54		PRTO0076PE	Flexible shaft
56		PRSL6703PI	Central gear wheel Z 100

adresimiz  
değişti

Emekyemez Mah. Yüksek Minare Sk. No:8 / 17  
80020 Karaköy / İstanbul  
Tel:212/2359535  
Fax:212/2359537