

DM-GF/HF

OPTICAL DATA TRANSMISSION DEVICE



This device is serial type, data transmission device. It can be connected to the serial interface of FA computer or PLC directly.

Specifications

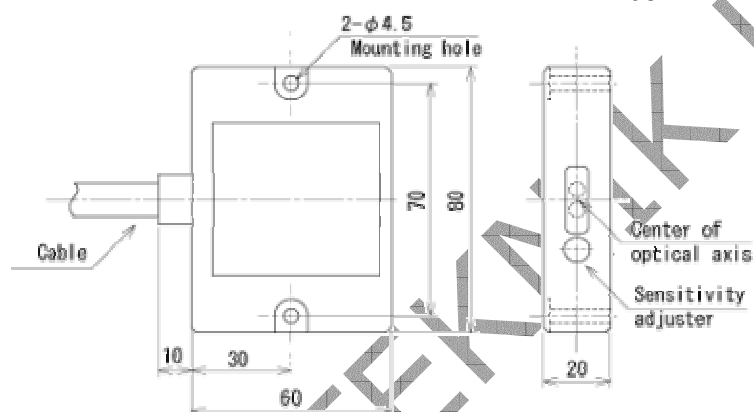
Type	Serial type			
Model No.	DM- GF1A GF1B	DM- GF2A GF2B	DM- HF1A HF1B	DM- HF2A HF2B
Transmission distance	0.6m	3m	0.6m	3m
Directional angle	±10°	±5°	±10°	±5°
Transmission speed	DC to 9,600bps			
Interface	RS-232C, RS-422			
Transmission method	Full-duplex two-way transmission			
Modulation method	FSK modulation			
Power source	10 to 30VDC(ripple 10% or less)			
Current consumption	140mA or less(when 12VDC), 60mA or less(when 24VDC)			
Ambient illuminance	10,000lux or less			

Ambient temperature/humidity	-10 to +50 degrees C, 85%RH or less
Vibration resistance	Double amplitude 1.5mm, 10 to 30Hz, each 2 hour in X, Y and Z directions
Impact resistance	500m/s ² , each 10 time in X, Y and Z directions
Connection	Lead wire (0.2mm ² , 15 cores, shield cable 2m long)
Protective structure	IP64(IEC standard)

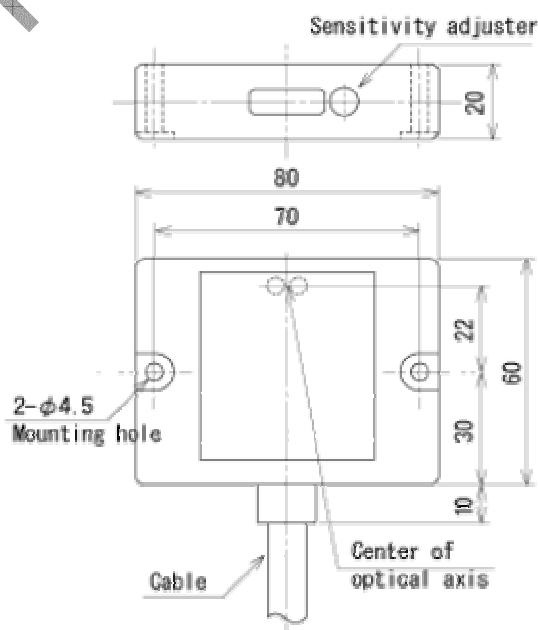
Note) Make sure to use Type A and Type B in pair because transmission system is full-duplex two-way transmission.

External dimension

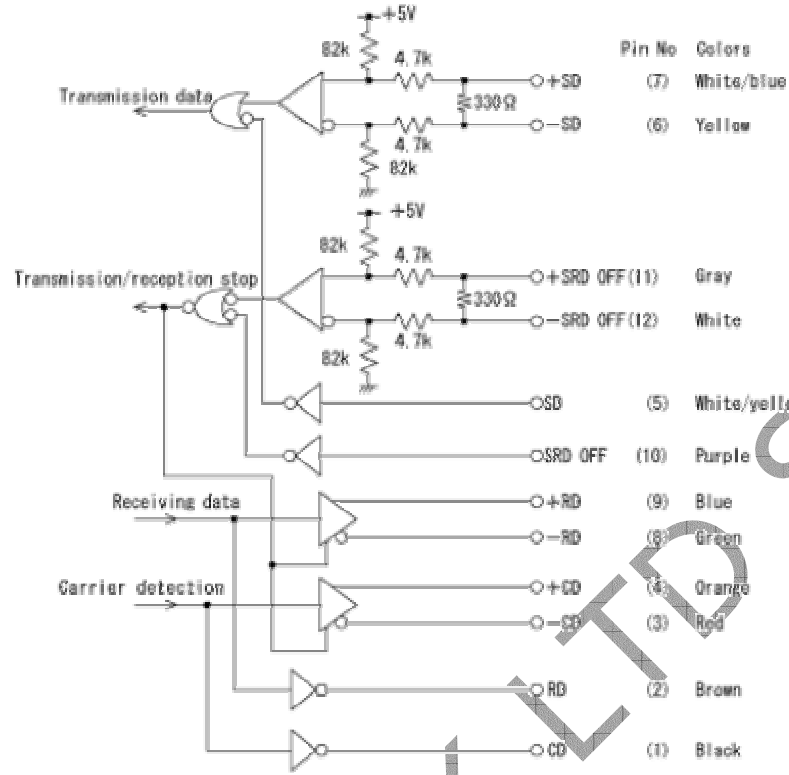
DM-GF1A/GF1B, DM-GF2A/GF2B(HEAD-ON type)



DM-HF1A/HF1B, DM-HF2A/HF2B(SIDE-ON type)



Input/output circuit



**adresimiz
değişti** Emekyemez Mah.Yüksek Minare Sk. No:8 / 17
80020 Karaköy / İstanbul
Tel:212/2359535
Fax:212/2359537