

CWF-01/02

OPTICAL DATA TRANSMISSION DEVICE



Transmission distance 50m, Small size and Light weight

Feature

- Necessary specifications are built-in 40x80x80mm. This is suitable for the application such as automatic warehouse, stacker crane or overhead crane as well as BWF series.

Specifications

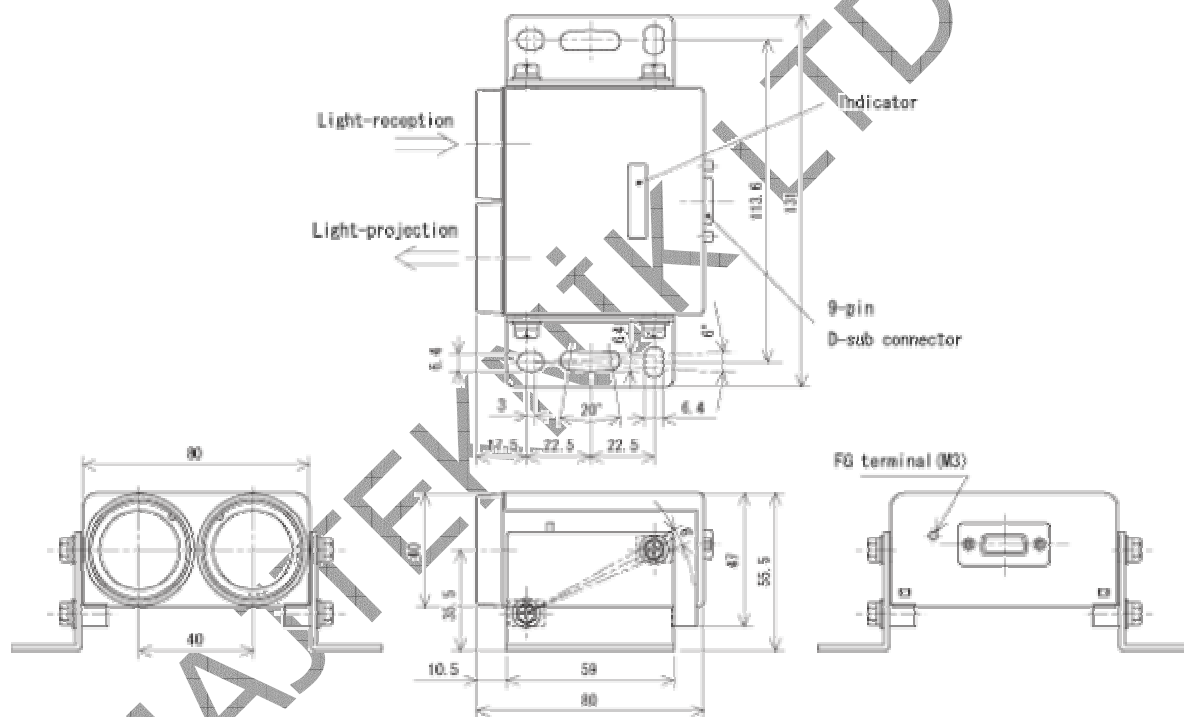
Model No.	CWF-01A	CWF-01B	CWF-02A	CWF-02B
Transmission distance	50m			
Directional angle	±2°			
Power source	24VDC （+10%, -10%）			
Current consumption	80mA			
Transmission method	Full-duplex two-way transmission			
Transmission speed	DC to 19,200 b p s		DC to 9,600 b p s	
Interface	RS-422		RS-232C	
Modulation method	FSK modulation			
Modulated frequency	Transmission:5.5MHz	Transmission:6.0MHz	Transmission:5.5MHz	Transmission:6.0MHz
	Reception:6.0MHz	Reception:5.5MHz	Reception:6.0MHz	Reception:5.5MHz
Connection	D-sub connector with 9-pin			
Ambient	-10 to +50 degrees C, 85%RH or less(not icing)			

temperature/humidity	
Ambient illuminance	20,000lux or less(Halogen/incandescent lamp)
Impact resistance	490m/s ² , each 10 time in X, Y and Z directions
Vibration resistance	Double amplitude 1.5mm, 10 to 55Hz, each 2 hour in X, Y and Z directions
Noise resistance	Impulse noise simulator, pulse width:1μ, 100ns, repeated cycle:100Hz, normal mode 1000V, common mode 500V
Protective structure	IP60(IEC standard)
Warning output(ARM)	ON when light-receiving level margin 1.5 times or more, Photo-coupler, open-collector 35V, 50mA
Weight	Approx. 240g

* Multi-connection type with CS(Chip select) input which can be connected up to max.10 pcs is lined-up.

* 12VDC type is available.

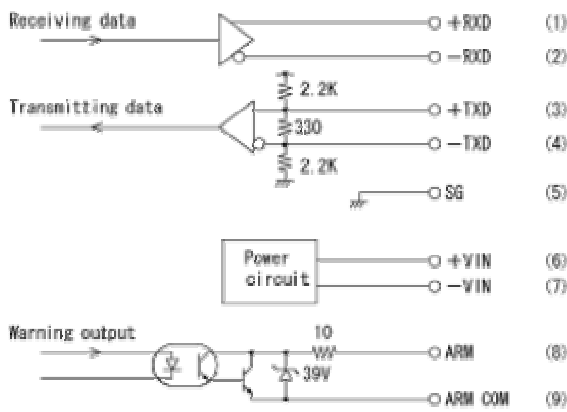
External dimension



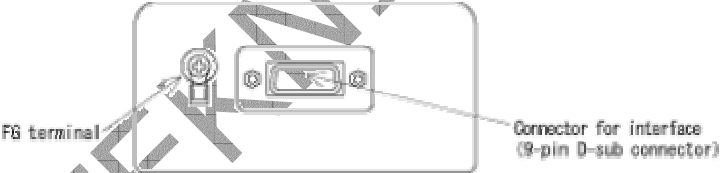
Input/output circuit

CWF-01A/01B

CWF-02A/02B



Connection



CWF-01A/01B

Interface	Pin No.	Symbols	Functions
RS-422	1	+RD	Reception data
	2	-RD	
	3	+SD	Transmission data
	4	-SD	
Power source	5	SG	Ground for signal
	6	+VIN	DC power(24VDC)
	7	-VIN (0V)	
Warning	8	ARM	Warning output (ARM)
	9	ARM COM	

CWF-02A/02B

Interface	Pin No.	Symbols	Functions
RS-232C	1	CD	Reception data(Carrier detect)
	2	RD	Transmission data
	3	SD	Reception data
	4	NC	Non-connection
	5	SG	Ground for signal
Power source	6	+VIN	DC power(24VDC)
	7	-VIN (0V)	
Warning	8	ARM	Warning output (ARM)
	9	ARM COM	

Note) Don't connect 0V(-VIN) for power source to ground for signal(SG).



Emekyemez Mah.Yüksek Minare Sk. No:8 / 17
80020 Karaköy / İstanbul
Tel:212/2359535
Fax:212/2359537

İMAJTEKNO